

# Physical and Mental Characteristics Create Breed Type



- Regal, dignified
- Strength, elegance
- Great size with a powerful, well-formed, smoothly muscled body
- Well-balanced, moves with a long reach and powerful drive



- Spirited, courageous, never timid
- Always friendly and dependable
- Great masculinity in Dogs
- Femininity in Bitches

## ESSENCE OF THE BREED

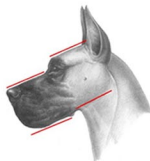


*The essence of Great Dane type is created by*

- balanced combination of sculptured headpiece
  - long, tapered, clean neck
  - well developed body
    - strong bone
- a glossy coat of correct rich color
- movement with precision and grace

The presence or absence of breed type is the single most important factor in assessing the overall quality of the Great Dane. Type includes the combination of structure, balance, movement and proper head.

## HEAD



- Rectangular, long, distinguished, expressive
- Finely chiseled, especially below the eyes
- Strong, pronounced stop
- Full square jaw with deep muzzle; fluttering lips are undesirable
- Head should be angular from all sides with flat planes, dimensions proportionate to the size of the Dane
- Viewed from side, skull and muzzle planes must be straight and parallel
- Viewed from top, skull should have parallel sides, bridge of nose should be as broad as possible
- Male's head is masculine, bitch's is more delicately formed
- Length from the tip of the nose to the center of the stop should be equal to the length from the center of the stop to the rear of the occiput

## EYES

- Medium size, deep set and dark
- In harlequins, light colored eyes, eyes of different colors and walleyes are permitted but not desirable
- Lively, intelligent expression
- Eyelids are almond-shaped and relatively tight
- Well-developed brows

*Haws and Mongolian eyes are serious faults*



↳ Natural Ears



Cropped Ears ↳

Natural Ears are set high, medium in size, folded forward close to the cheek. The line of the folded ear should be level with the skull. If cropped, the ear length is in proportion to the size of the head, and ears are carried uniformly erect

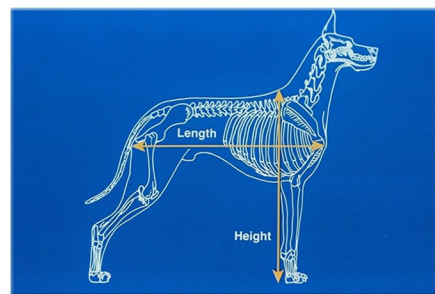
## NOSE

- Black except in blue Dane where it is a dark blue-black
- A black spotted nose is permitted on the Harlequin; a pink colored nose is not desirable
- A split nose is a disqualification

## TEETH

- Strong, well developed, clean with full dentition
- Incisors of the lower jaw touch very lightly the bottoms of the inner surface of the upper incisors (scissors bite)
- Undershot jaw is a very serious fault
- Overshot or wry bites are serious faults
- Even bites, misaligned or crowded incisors are minor faults

## A SQUARE BREED



Squareness is measured from the withers to the ground, and from the point of shoulder to the back of the upper thigh.

## SIZE, PROPORTION AND SUBSTANCE

*Danes under minimum height must be disqualified*



### MALE

- Must measure 30 inches at shoulder, preferably 32 inches or more if well proportioned
- Males should appear more massive with larger frame and heavier bone

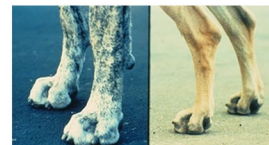
### FEMALE

- Must measure 28 inches at shoulder, preferably 30 inches or more if well proportioned
- In bitches a somewhat longer body is permissible, providing she is well proportioned



*Coarseness or lack of substance is equally undesirable*

## FEET AND TOES



Feet should be round and compact with well-arched toes, neither toeing in or out, nor rolling to the inside or outside. Nails should be short, strong and dark; may be lighter in harlequins. Dewclaws may or may not be removed.

## NECK, TOPLINE AND BODY

Neck is firm, clean, high set, well arched, long and muscular; it flows smoothly into the withers.

Withers slope into a short level back with broad loin. Chest is broad, deep and well muscled. Forechest is well developed without pronounced sternum. Brisket extends to the elbow with well-sprung ribs. Underline is tightly muscled with well-defined tuck up.

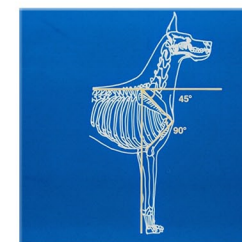
Croup is broad and very slightly sloping. Tail is a continuation of the spine. At rest, the tail falls straight. When running, the tail may curve slightly, but not above the level of the back.

*A ring or hooked tail is a serious fault.*



## FOREQUARTERS

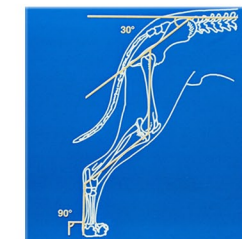
Forequarters should be strong and muscular. Shoulder blade should be strong and sloping, forming a right angle in its articulation with the upper arm. Shoulder blade and upper arm should be the same length. Elbow should be ½ the distance from the withers to the ground. The pasterns slope slightly.



*Correct Shoulder Angulation*

## HINDQUARTERS

Hindquarters are strong, broad, muscular and well angulated with well let down hocks. The hock joints appear to be perfectly straight.



*Correct Rear Angulation*

